



EHAT Lesson 1.2: Land Service Munitions



Overview

1.2.1 Introduction to Land Service Munitions



Terminal Learning Objectives

At the end of this module, the participants will be able to recognize and describe different LSA types based on their key features.



1.2.1 Introduction to Land Service Ammunition

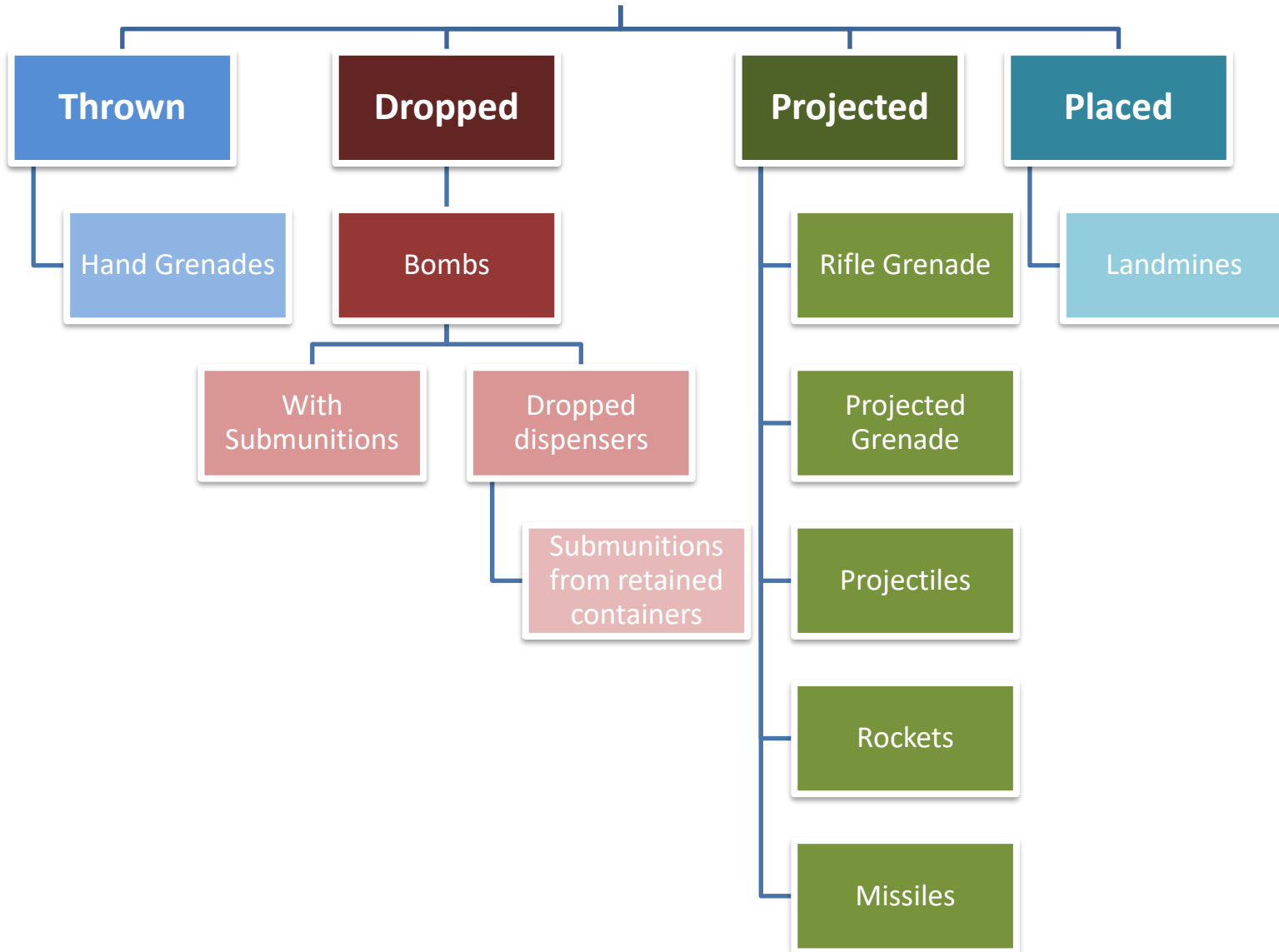
Land Service Ammunition

Items containing explosive or pyrotechnic compounds which are placed, thrown, launched, projected or fired so as to cause damage to men or equipment during land warfare.



Land Service Ammunition

Methods of Delivery



Land Service Ammunition

There are six main categories of LSA

1. Mines
2. Grenades
3. Projectiles
4. Mortars
5. Rockets and Missiles
6. Sub-munitions

Mines



Mines

Anti-Personnel Landmines

Blast

Fragmentation

Directional Fragmentation

Bounding Fragmentation



Mines

Anti-Personnel Landmines



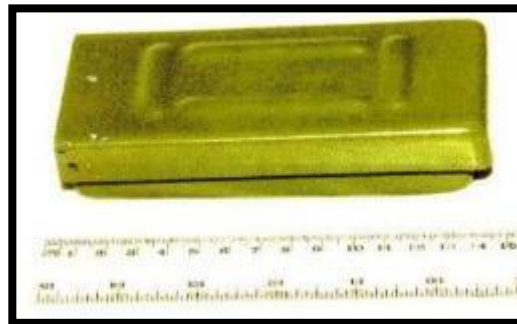
PMN-2



VS-50



PMN



PMA-1



TYPE-72

Mines

Anti-Personnel Landmines – Blast

Mine relies on the
explosive power of its
contents



Mines

Anti-Personnel Landmines – Blast



Mines

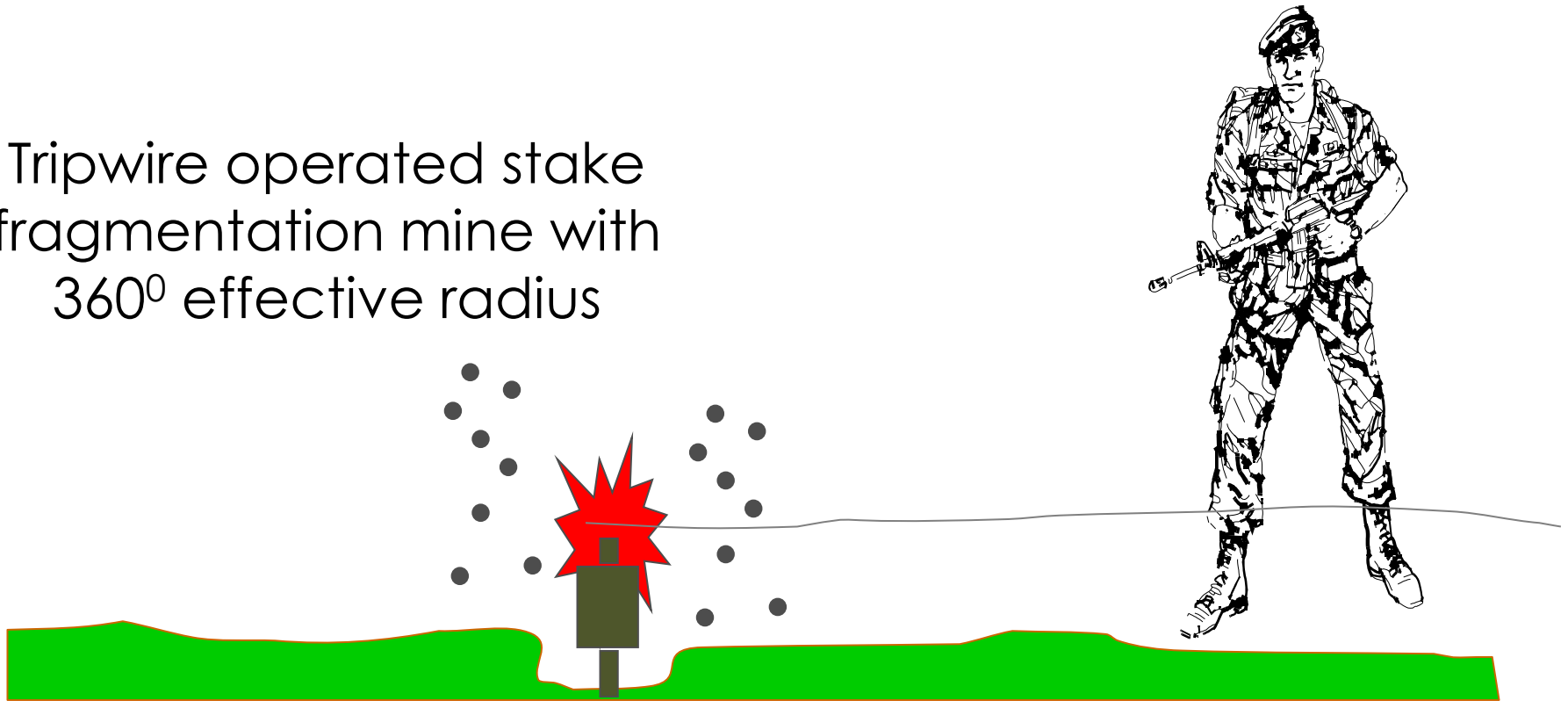
Anti-Personnel Landmines – Fragmentation



Mines

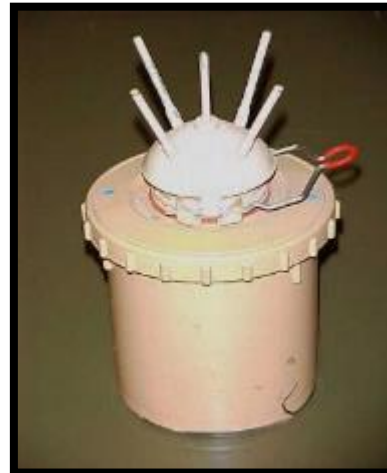
Anti-Personnel Landmines – Fragmentation

Tripwire operated stake
fragmentation mine with
 360° effective radius



Mines

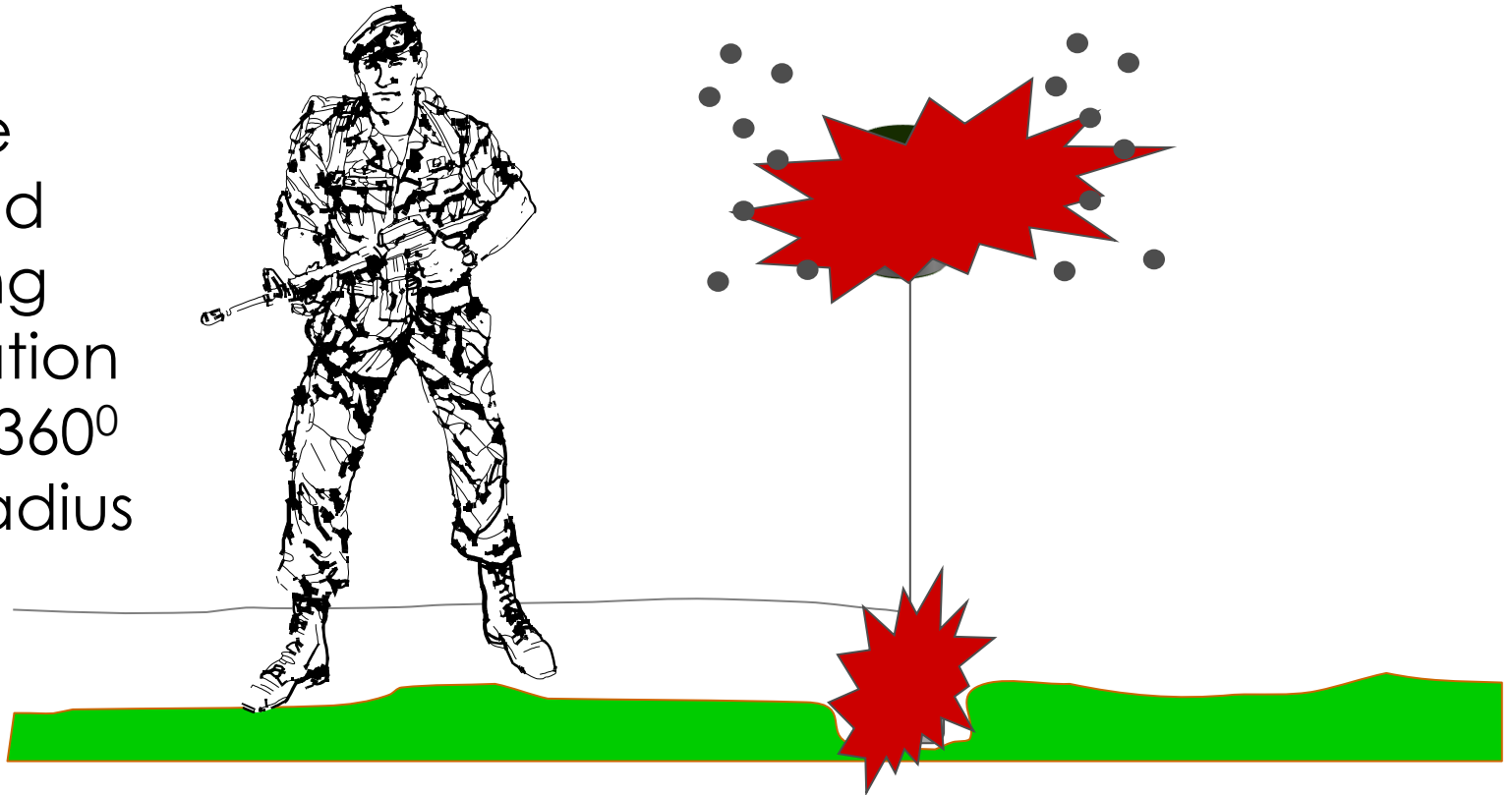
Anti-Personnel Landmines – Bounding Fragmentation



Mines

Anti-Personnel Landmines – Bounding Fragmentation

Tripwire
operated
bounding
fragmentation
mine with 360°
effective radius



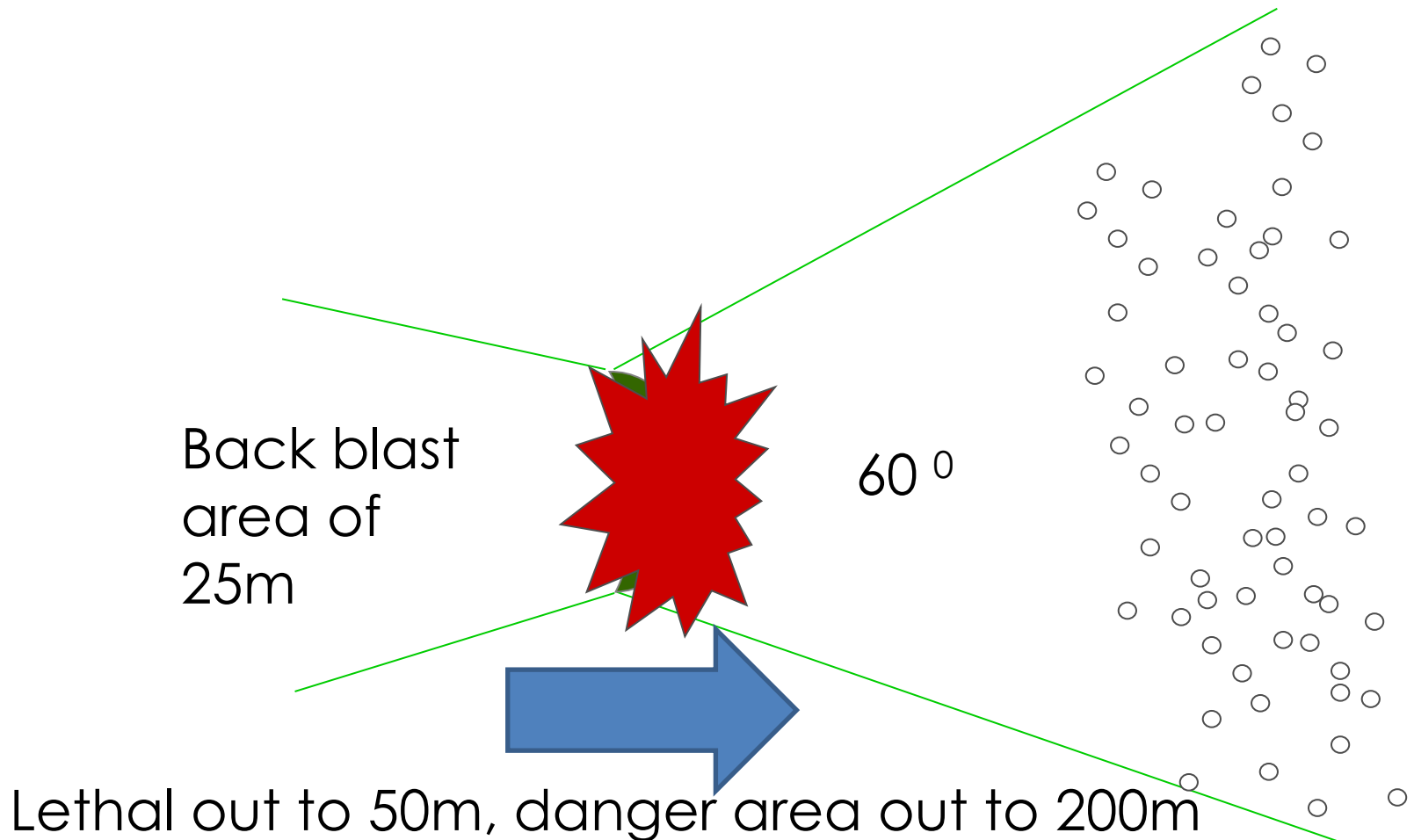
Mines

Anti-Personnel Landmines – Directional Fragmentation



Mines

Anti-Personnel Landmines – Directional Fragmentation



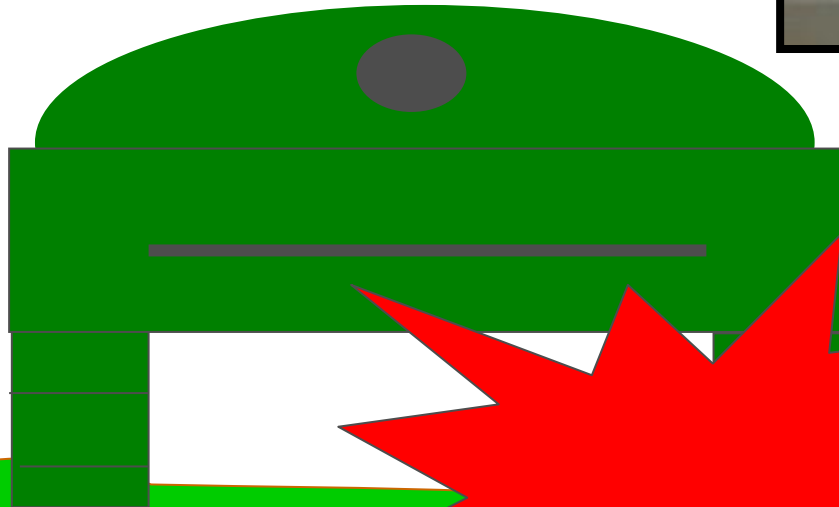
Mines

Anti-Vehicle



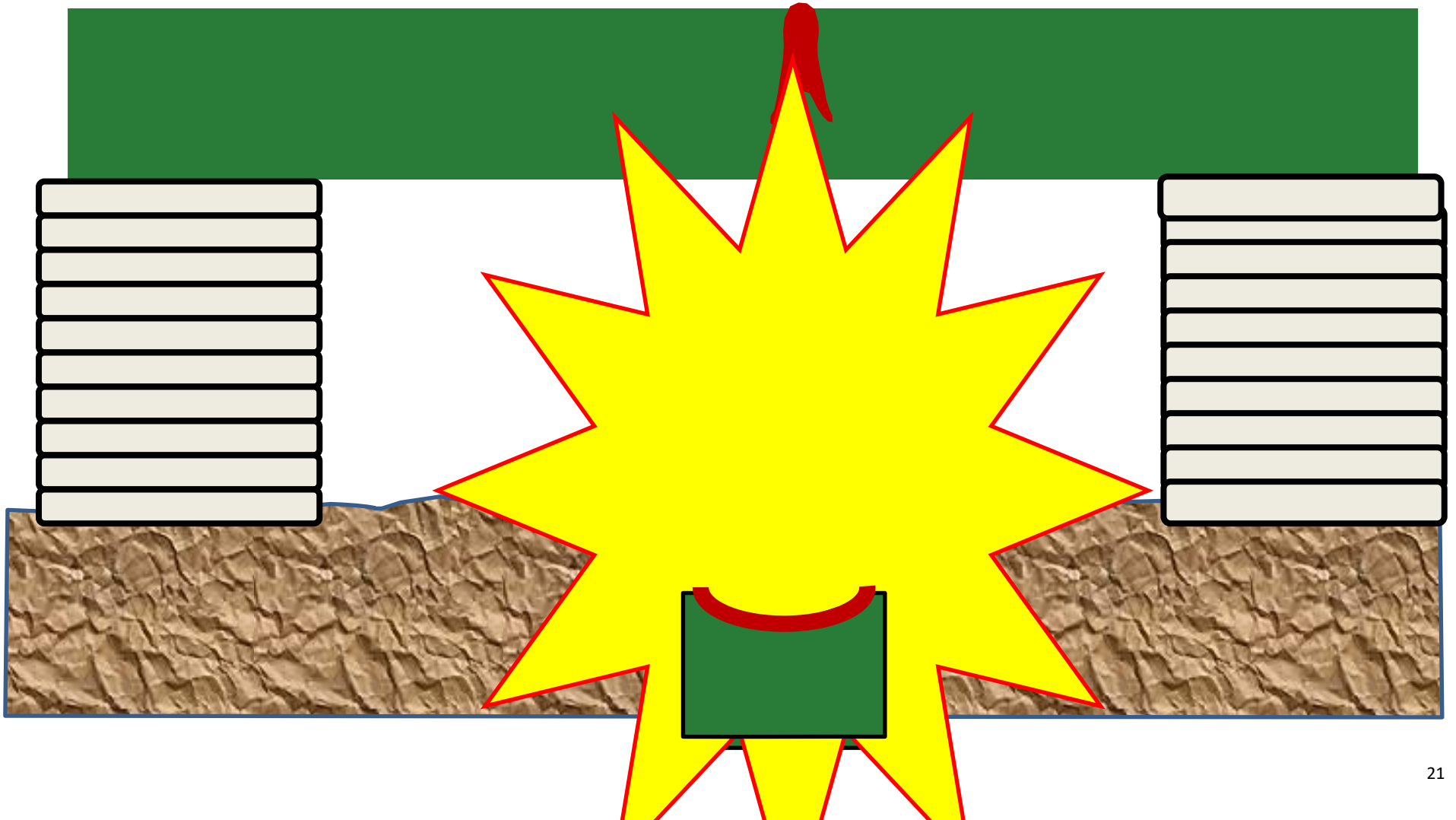
Mines

Anti-Vehicle - Blast



Mines

Anti-Vehicle – Shape Charge



Mines

Anti-Vehicle – Shape Charge



Hand Grenades

1



2



3



4



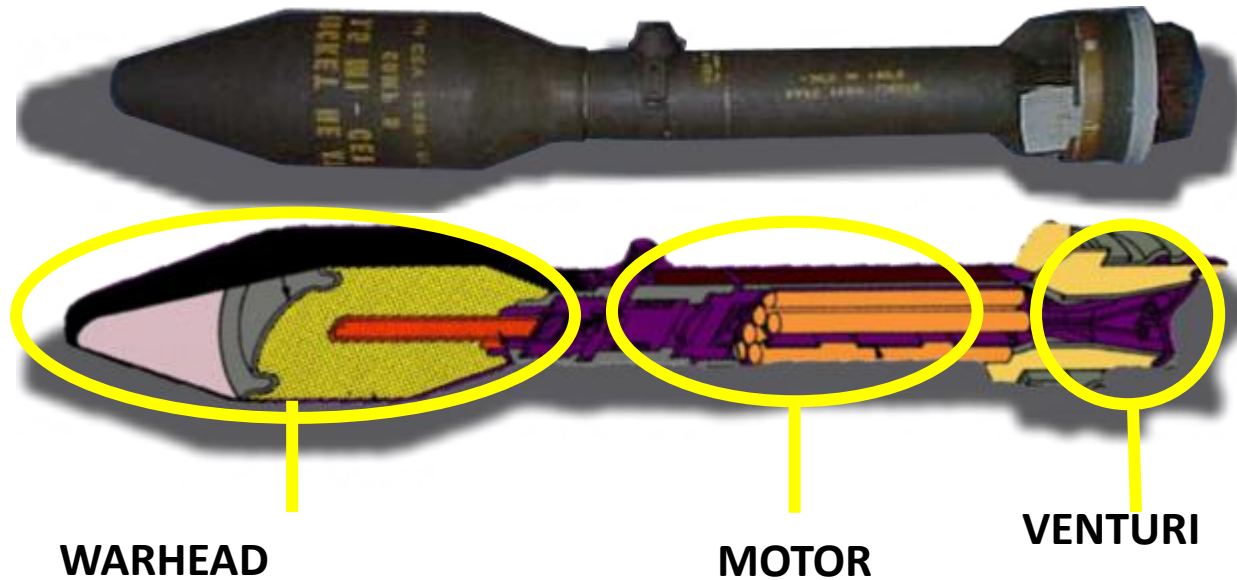
Projectiles



Mortars



Rockets and Missiles



Rockets and Missiles



Rocket Propelled Grenades



Rifle Grenades



Bombs/Sub-munition Carrier



Submunitions and Bomblets



Questions?

